

# MONTHLY MEMBERSHIP PROGRESS REPORT

LOCATION MICHIGAN

District 11 D1

Results as of: 6/30/2022

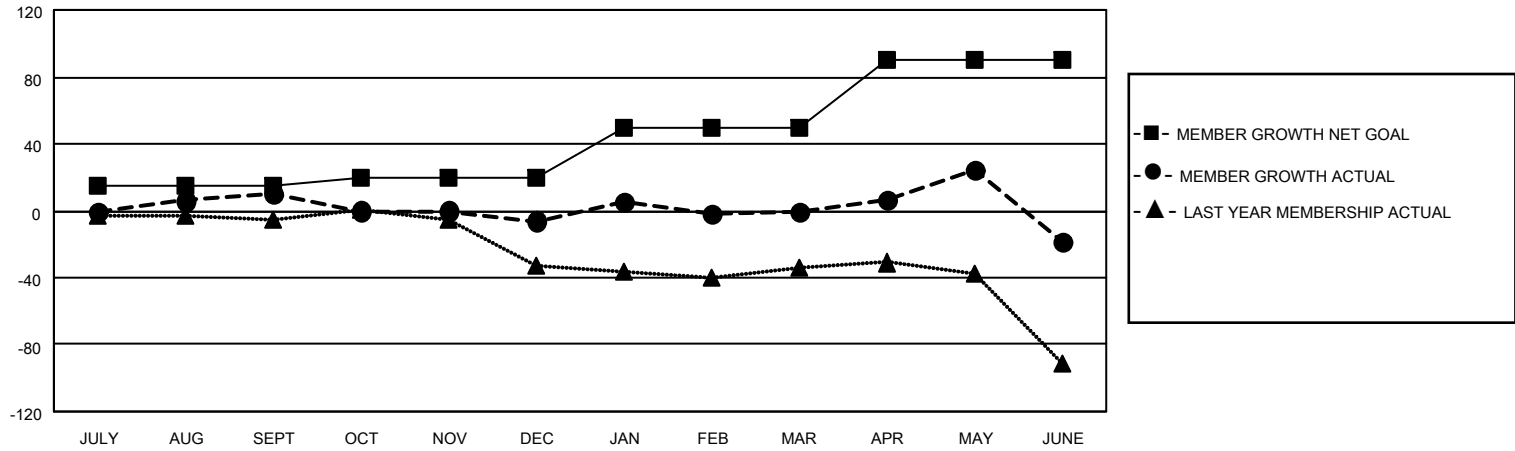
Clubs			
RESULTS FOR 2021-2022			
QUARTER	NEW CLUB GOAL	NEW CLUBS	DROPPED CLUBS
JULY/AUG/SEPT	0	0	0
OCT/NOV/DEC	1	0	1
JAN/FEB/MAR	0	0	0
APR/MAY/JUNE	1	0	0

Members			
RESULTS FOR 2021-2022			
QUARTER	MEMBER GROWTH NET GOAL	MEMBER GROWTH ACTUAL	DROPPED MEMBERS ACTUAL (including transfers)
JULY/AUG/SEPT	15	32	15
OCT/NOV/DEC	5	40	40
JAN/FEB/MAR	30	32	22
APR/MAY/JUNE	40	74	87

**GOALS AND ACTUAL NEW CLUBS CUMULATIVE**



**GOALS AND ACTUAL MEMBERS CUMULATIVE**



**DROPPED CLUBS: 1**

**25 CLUBS OF 38 ADDED 1 OR MORE NEW MEMBERS**

**GENDER DISTRIBUTION**

MALE	725 (67.63%)
FEMALE	347 (32.37%)
NON BINARY	0 (0.00%)
PREFER NOT TO ANSWER	0 (0.00%)

**DROPPED MEMBERS**

[CLICK HERE FOR CUMULATIVE MEMBERSHIP DATA](#)

DECEASED	27
CLUB CANCELLED	0
OTHER	137
<b>TOTAL</b>	<b>164</b>

TOTAL FAMILY UNIT MEMBERS	220
FAMILY MEMBERS PAYING HALF DUES	112